

Schlafe, mein Liebster

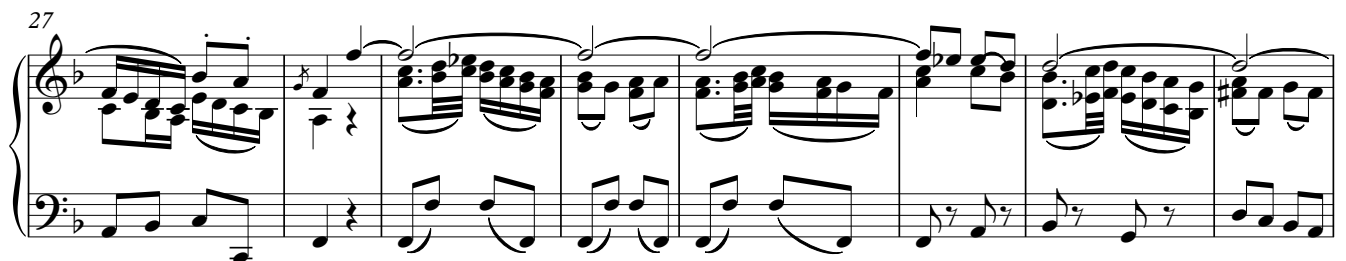
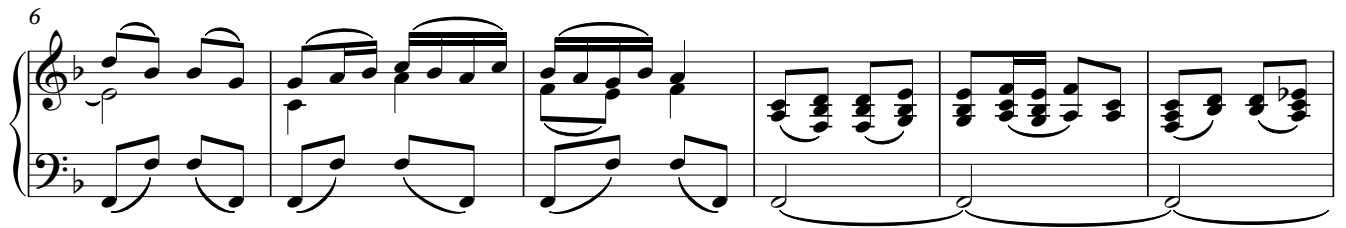
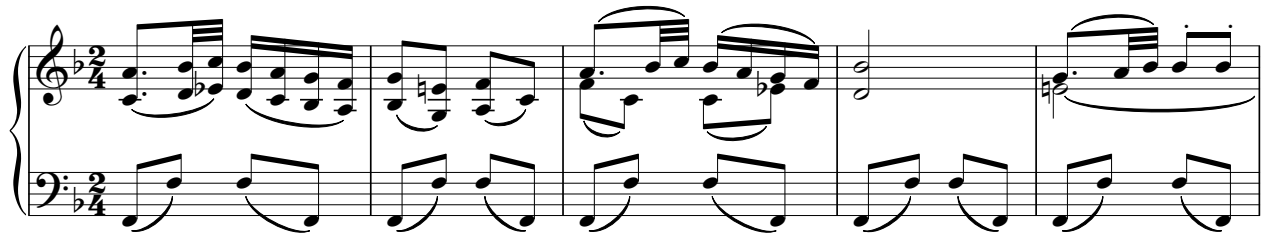
uit "Weihnachtsoratorium"

Daknam's orgelboek

Johann Sebastian BACH

orgelbew. Jo Van Eetvelde

(4.12.16)



This page of musical notation contains eight systems of staves, each with a treble and bass clef. The key signature is one flat (B-flat). The measures are numbered as follows:

- System 1: Measures 43 to 50. The right hand features complex chordal textures and melodic lines, while the left hand provides a steady bass accompaniment.
- System 2: Measures 51 to 58. The right hand continues with intricate patterns, including a trill in measure 56. The left hand maintains its accompaniment.
- System 3: Measures 59 to 65. The right hand shows more melodic development with slurs and ties. The left hand continues with eighth-note patterns.
- System 4: Measures 66 to 71. The right hand features dense chordal passages. The left hand continues with its accompaniment.
- System 5: Measures 72 to 78. The right hand has a more active melodic line. The left hand continues with eighth-note patterns.
- System 6: Measures 79 to 85. The right hand includes a trill in measure 81. The left hand continues with its accompaniment.
- System 7: Measures 86 to 92. The right hand features a melodic line with slurs and ties. The left hand continues with its accompaniment.
- System 8: Measures 93 to 100. The right hand includes a trill in measure 94. The left hand continues with its accompaniment.

101

110

117

124

130

137

143

148

D. C.