

Servo gripper SG

SG-50

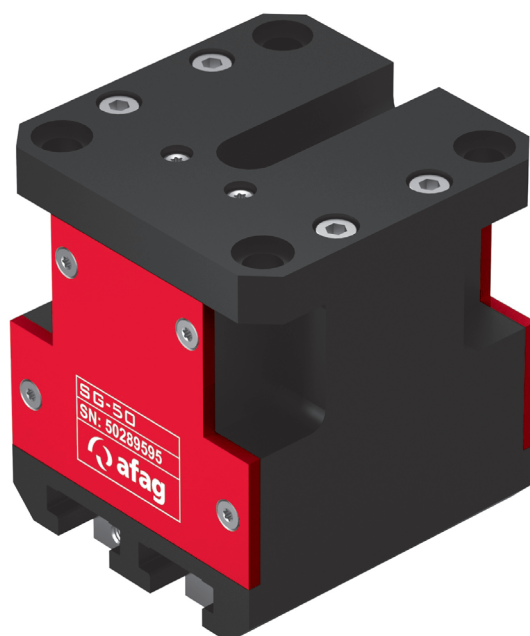
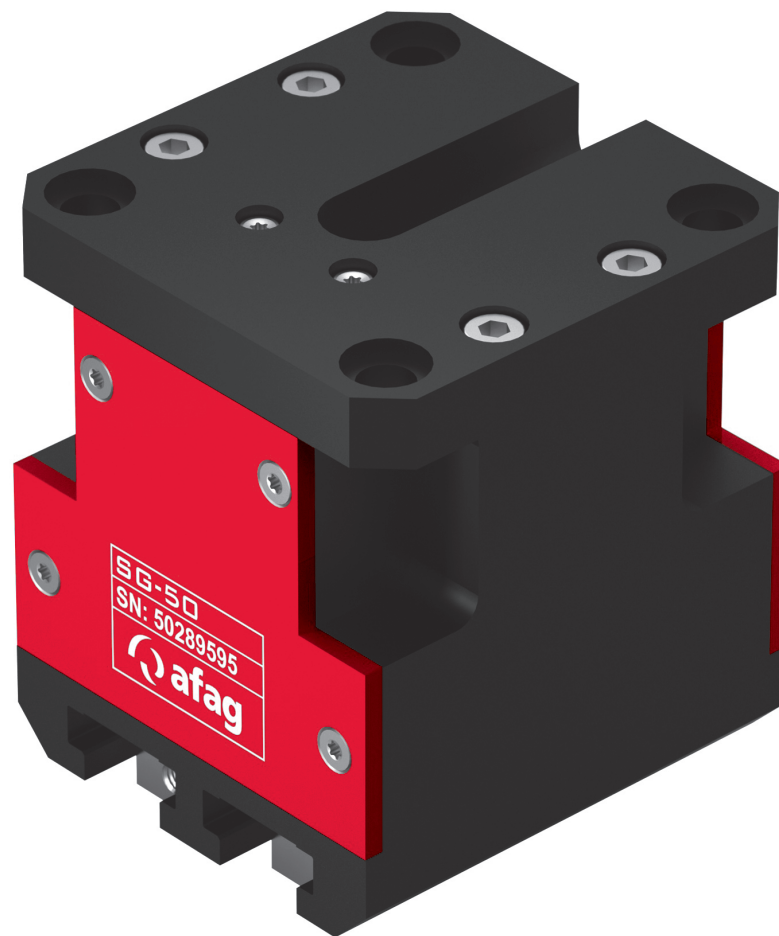


Table of contents: SG

Servo gripper SG	Page
SG-50	277

Servo gripper SG

SG-50



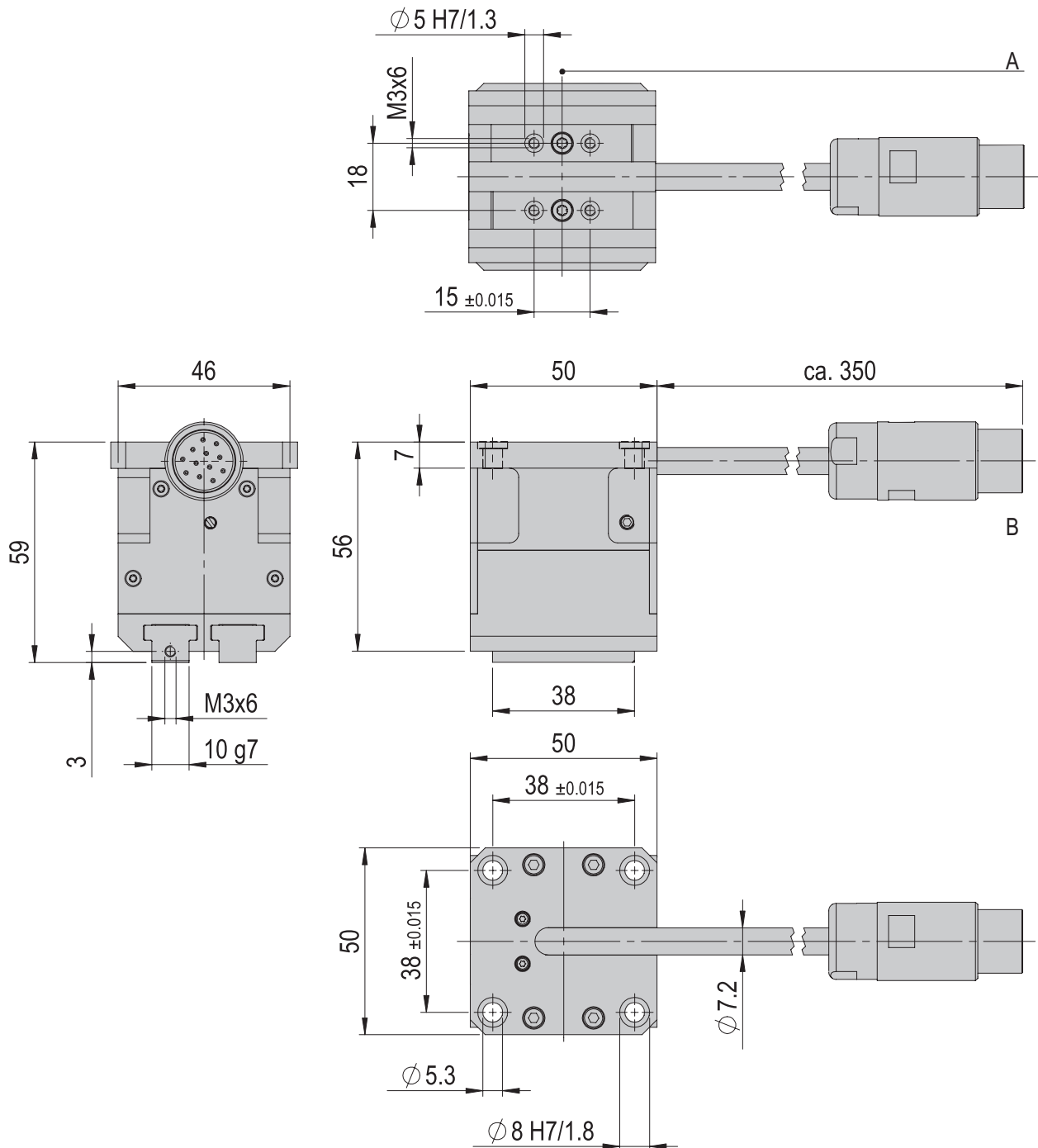
12

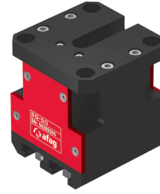
- Integrated measuring system
- Programmable jaw stroke
- Replaces separate testing station

Dimensions and dimension drawings

SG-50

Type	SG-50
A	Jaws in middle position (+/- 5 mm)
B	12-pole industrial plug M17





SG-50	
Attachment grid	38 x 38 mm
Attachment grid alternative	Jaws: 15 mm
Attachment thread	M5
Attachment thread alternative	Jaws: M3
Operating temperature	0- 40 °C
Storage temperature	-20 - 50 °C
Humidity	20 - 80 %

Type	SG-50	SG-50-ABq
Order number	50289595	50460223
Net weight	0.42 kg	0.42 kg
Max. payload	0.5 kg	0.5 kg
Gripping time	2x2 mm: <100 ms	2x2 mm: <100 ms
Gripping force	max. 50 N	max. 50 N
Opening stroke	2 x 10 mm	2 x 10 mm
Noise level	< 65 dB (A)	< 65 dB (A)
Dimensions W x H x D	50 x 50 x 59 mm	50 x 50 x 59 mm
Nominal current	2.4 A	2.4 A
Peak current	3.6 A	3.6 A
Protection type	IP 40	IP 40
Intermediate circuit voltage	24 VDC	24 VDC
Reverse play	< 0.2 mm	< 0.2 mm
Incremental encoder type	Digital A+B	Digital with A/A- ; B/B- and Z/Z- track
Incremental encoder voltage	5 VDC	5 VDC
Number of increments	4096	4096
Reference switch type	NC (normally closed)	NC (normally closed)
Reference switch voltage	24 VDC	24 VDC
Control	SE-24	C11xx
Repeat accuracy	+/- 0.05 mm	+/- 0.05 mm
Handling accuracy	< 0.1 mm	< 0.1 mm
Absolute accuracy	0.1 mm	0.1 mm
Mounting position	✦	✦

The technical data pertains to Afag standard test conditions.
 Note: The electrical data for the operation with alternative servo controllers is available upon request
 Cleanroom class ISO 14644-1, class ISO 7

*The gripping force depends on the selected finger length, the power and the current speed. Observe the gripping force diagrams.

Included in the delivery

- (Catalogue HT accessories)
- 2x Centering bushing Ø8x3.5
 - 8x Mounting screw M5x16

Accessories

- (Catalogue HT accessories)
- SG-50 only: Motor cable-M14
 - SG-50 only: Servocontroller SE-24
 - SG-50 ABq only: Motor cable-M19
 - SG-50 only: Servocontroller C1xx

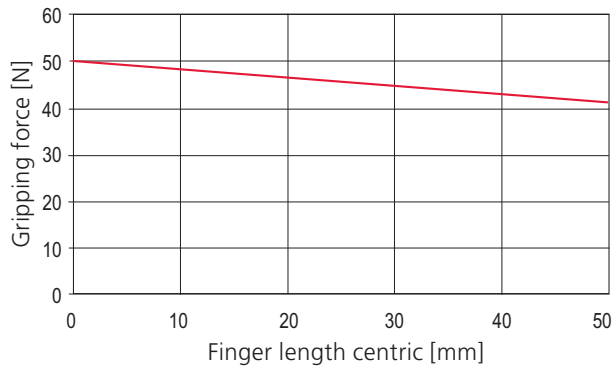
Alternative accessories

- (Catalogue HT accessories)
- Additional motor cables
 - Additional controllers
 - Additional power supplies

Warranty: 24 months following commissioning, but a maximum of 27 months following delivery

Gripping force diagrams per jaw

Gripping force depends on finger length



Gripping force depends on power

