

Rotary modules RE

RE-50 - RE-75

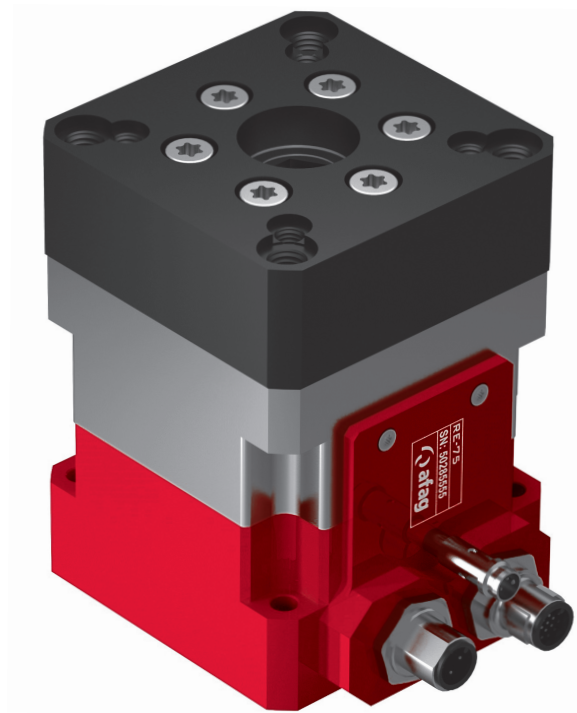
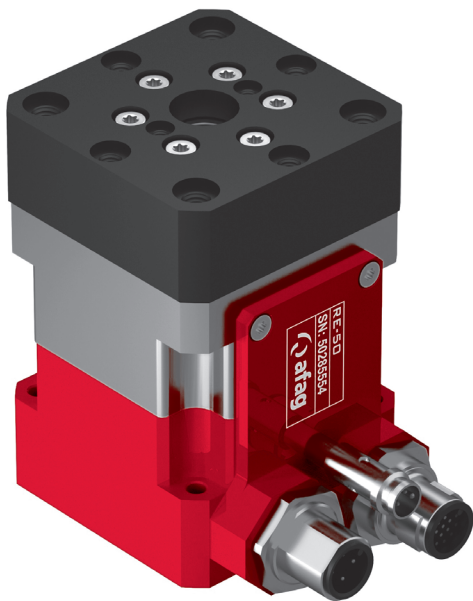
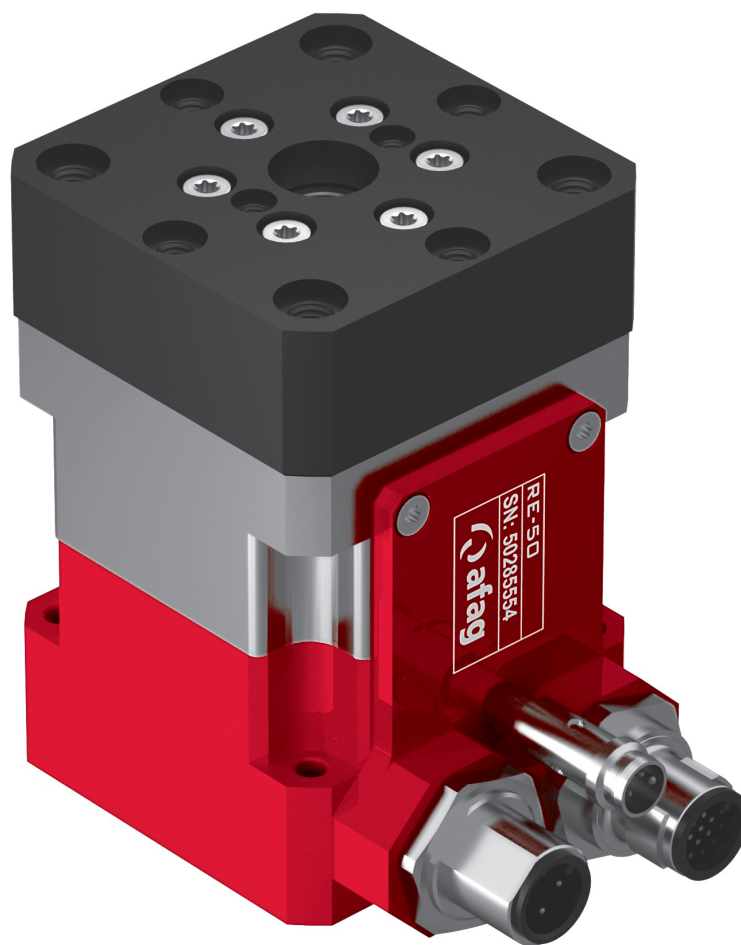


Table of contents: RE

Rotary modules RE	Page
RE-50	209
RE-75	215
Accessories RE	220

Rotary module RE

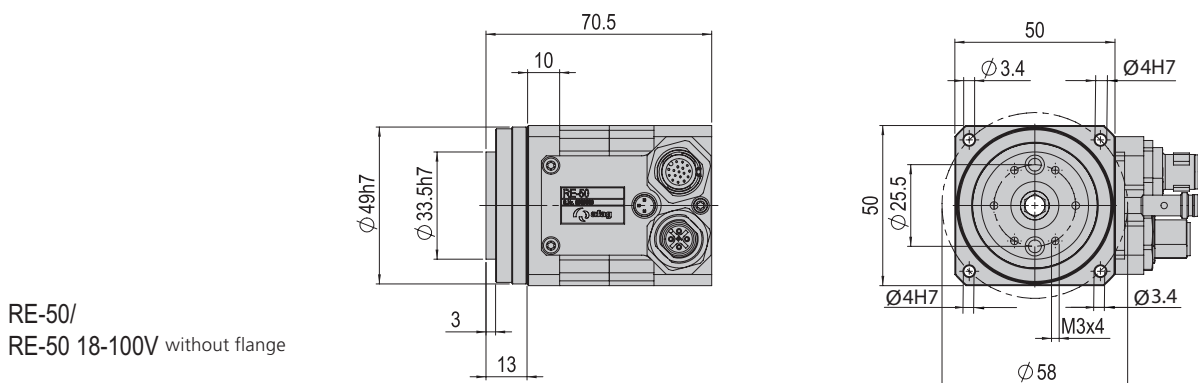
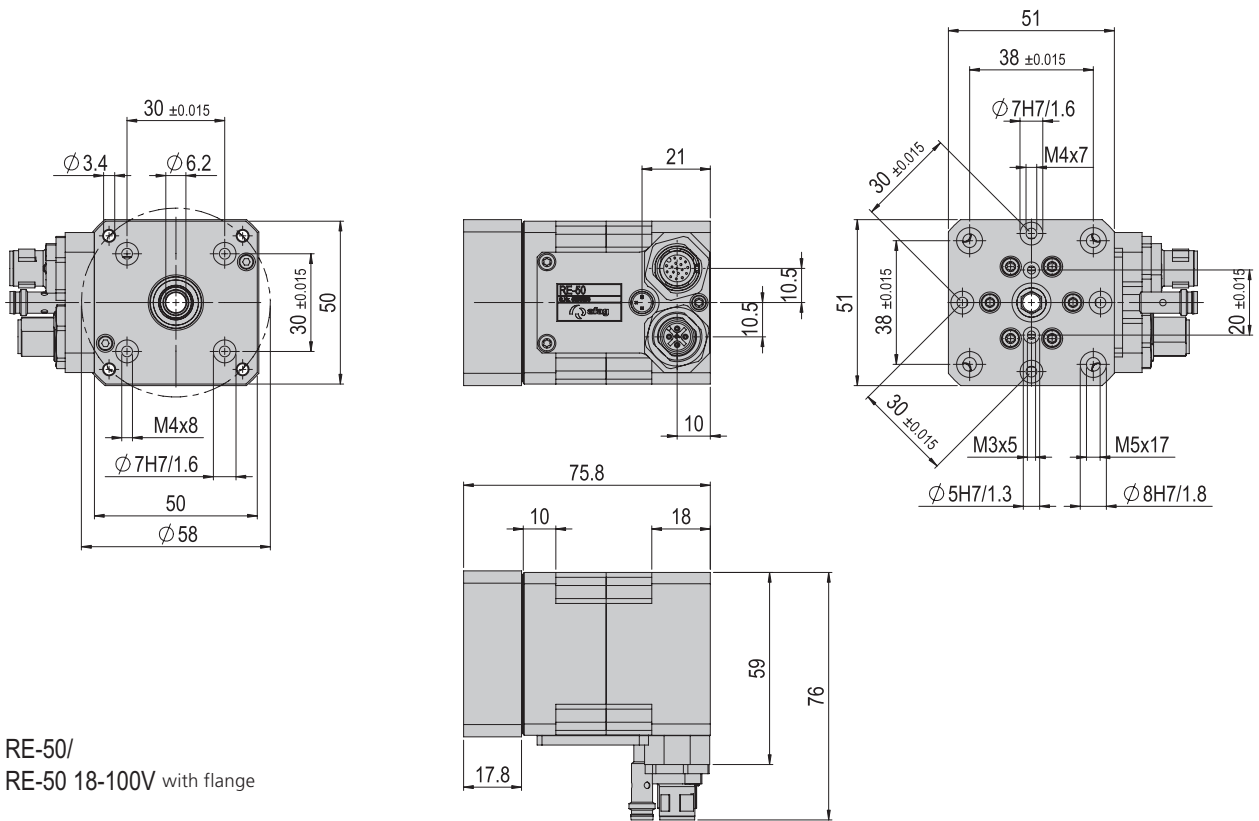
RE-50



- Very compact
- High torque
- Plug & Go (ready for installation)

Dimensions and dimension drawings

RE-50





RE-50	
Attachment grid rear	30 x 30 mm
Attachment grid rear LK Ø	58 mm
Attachment grid, front	30 x 30 mm
Attachment grid, front, alternative	38 x 38 mm
Operating temperature	0 - 40 °C
Storage temperature	0 - 50 °C

Type	RE-50	RE-50 without flange	RE-50 18-100V	RE-50 18-100V without flange
Order number	50285554	50294005	50328767	50328768
Net weight	0.575 kg	0.502 kg	0.575 kg	0.502 kg
Max. payload, radial	*0 - 800 N	*0 - 800 N	*0 - 800 N	*0 - 800 N
Max. payload, axial	*0 - 200 N	*0 - 200 N	*0 - 200 N	*0 - 200 N
Max. rotational speed	*200 rpm	*200 rpm	*/ **200 rpm	*200 rpm
Noise level	< 65 dB (A)	< 65 dB (A)	< 65 dB (A)	< 65 dB (A)
Repeat accuracy	+/- 0.0017 °	+/- 0.0017 °	+/- 0.0017 °	+/- 0.0017 °
Hollow shaft Ø	6.2 mm	6.2 mm	6.2 mm	6.2 mm
Operating voltage	230 V	230 V	18 - 100 V	18 - 100 V
Nominal torque	0.75 Nm	0.75 Nm	0.75 Nm	0.75 Nm
Max. output torque	*1.8 Nm	*1.8 Nm	*1.8 Nm	*1.8 Nm
Max. static tipping torque	93 Nm	93 Nm	93 Nm	93 Nm
Max. dynamic tipping torque	15 Nm	15 Nm	15 Nm	15 Nm
Tipping strength	5.8 Nm/arcmin	5.8 Nm/arcmin	5.8 Nm/arcmin	5.8 Nm/arcmin
Protection type	IP 40	IP 40	IP 40	IP 40
Ratio	i = 30	i = 30	i = 30	i = 30
Nominal speed	117 rpm	117 rpm	117 rpm	117 rpm
Mounting position	✦	✦	✦	✦

The technical data pertains to Afag standard test conditions.
Cleanroom class ISO 14644-1, class ISO 7

*The maximum values listed above depend on the application and must not be combined. In case of doubt, please contact your Afag partner
**With SE-24: 117 rpm

Included in the delivery

(Catalogue HT accessories)

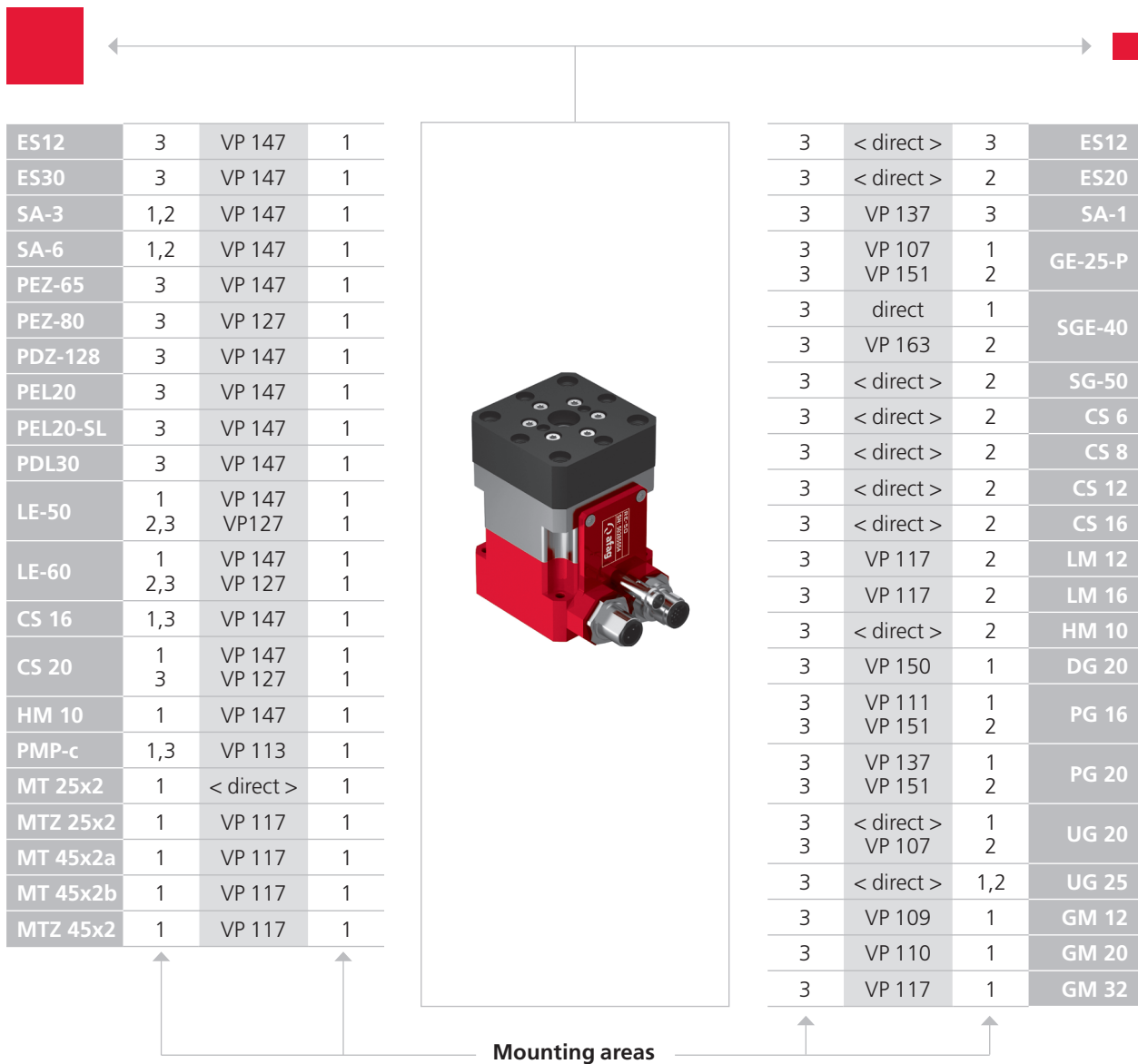
- 2x Centering bushing Ø7x3
- 4x Mounting screw M3x22

Accessories

- Flange plate set RE-50 [p. 220]

Warranty: 24 months following commissioning, but a maximum of 27 months following delivery

afag.com

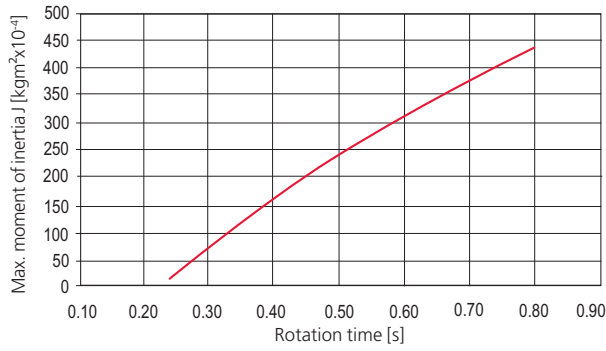


CS, ES 	LM 	HM 	SA 	UG, GM, SG, DG, PG, GE, SGE
PMP, PMP-c 	PEZ, PDZ 	PEL, PDL 	RM, RE 	CR, RM 32, RE, SREH, RA

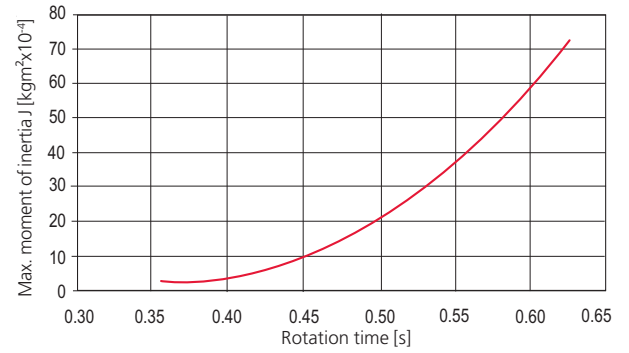
Note that there might be different mounting positions from one module to another one.
The required connection elements and the range of support columns are depicted in the catalogue HT accessories.

Load diagrams

Rotation time RE-50, 180° - horizontal with SE power

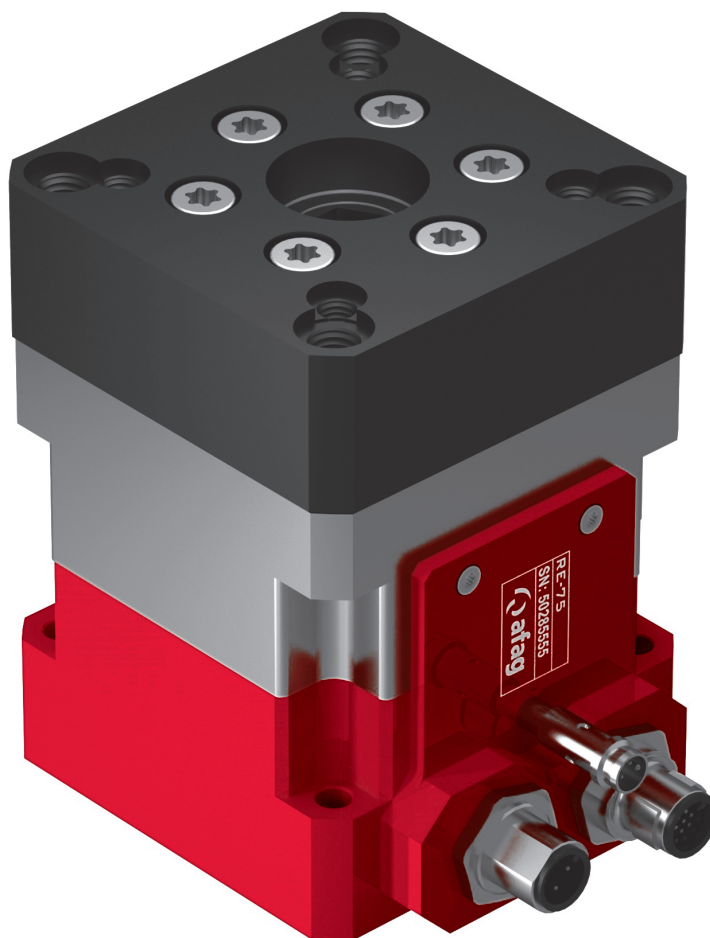


Rotation time RE-50 18-100V, 180° - horizontal with SE-24



Rotary module RE

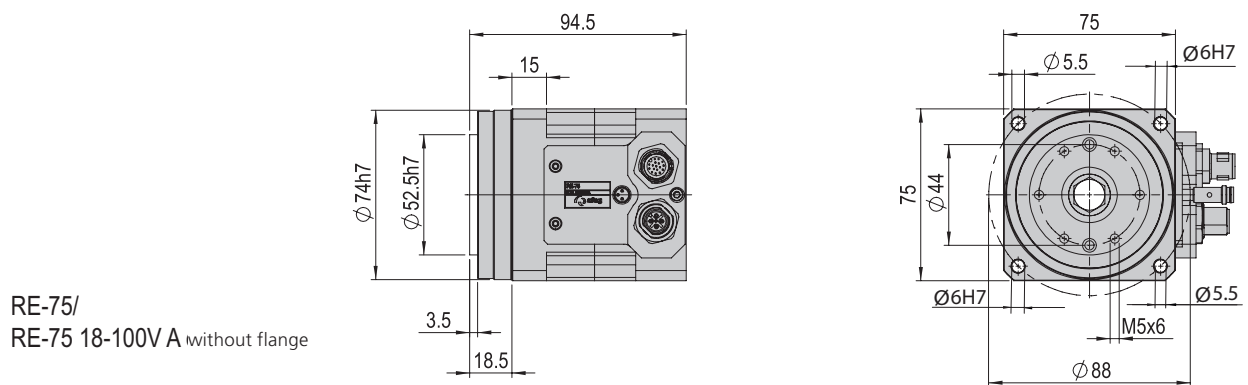
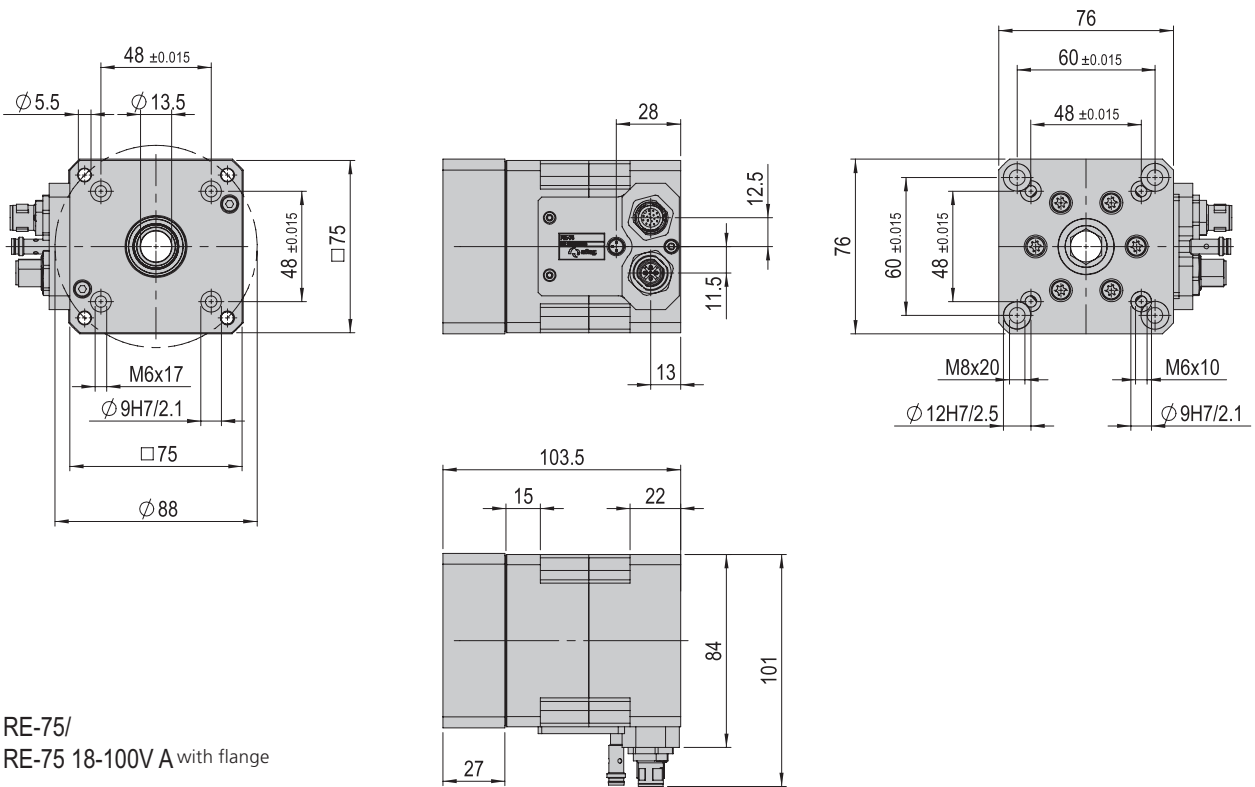
RE-75

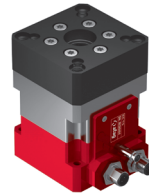


- Very compact
- High torque
- Plug & Go (ready for installation)

Dimensions and dimension drawings

RE-75





RE-75	
Attachment grid rear	48 x 48 mm
Attachment grid rear LK Ø	88 mm
Attachment grid, front	48 x 48 mm
Attachment grid, front, alternative	60 x 60 mm
Operating temperature	0 - 40 °C
Storage temperature	0 - 50 °C

Type	RE-75	RE-75 without flange	RE-75 18-100V A	RE-75 18-100V A without flange
Order number	50285555	50294006	50545220	50545219
Net weight	1.725 kg	1.482 kg	1.725 kg	1.482 kg
Max. payload, radial	*0 - 1200 N	*0 - 1200 N	*0 - 1200 N	*0 - 1200 N
Max. payload, axial	*0 - 600 N	*0 - 600 N	*0 - 600 N	*0 - 600 N
Max. rotational speed	*200 rpm	*200 rpm	*200 rpm	*200 rpm
Noise level	< 65 dB (A)	< 65 dB (A)	< 65 dB (A)	< 65 dB (A)
Repeat accuracy	+/- 0.0017 °	+/- 0.0017 °	+/- 0.0017 °	+/- 0.0017 °
Hollow shaft Ø	13.5 mm	13.5 mm	13.5 mm	13.5 mm
Operating voltage	230 V	230 V	18 - 100 V	18 - 100 V
Nominal torque	3.5 Nm	3.5 Nm	3.5 Nm	3.5 Nm
Max. output torque	*9 Nm	*9 Nm	*9 Nm	*9 Nm
Max. static tipping torque	230 Nm	230 Nm	230 Nm	230 Nm
Max. dynamic tipping torque	75 Nm	75 Nm	75 Nm	75 Nm
Tipping strength	23.5 Nm/arcmin	23.5 Nm/arcmin	23.5 Nm/arcmin	23.5 Nm/arcmin
Protection type	IP 40	IP 40	IP 40	IP 40
Ratio	i = 30	i = 30	i = 30	i = 30
Nominal speed	100 rpm	100 rpm	100 rpm	100 rpm
Mounting position	✦	✦	✦	✦

The technical data pertains to Afag standard test conditions.
Cleanroom class ISO 14644-1, class ISO 7

*The maximum values listed above depend on the application and must not be combined. In case of doubt, please contact your Afag partner.

Included in the delivery

(Catalogue HT accessories)

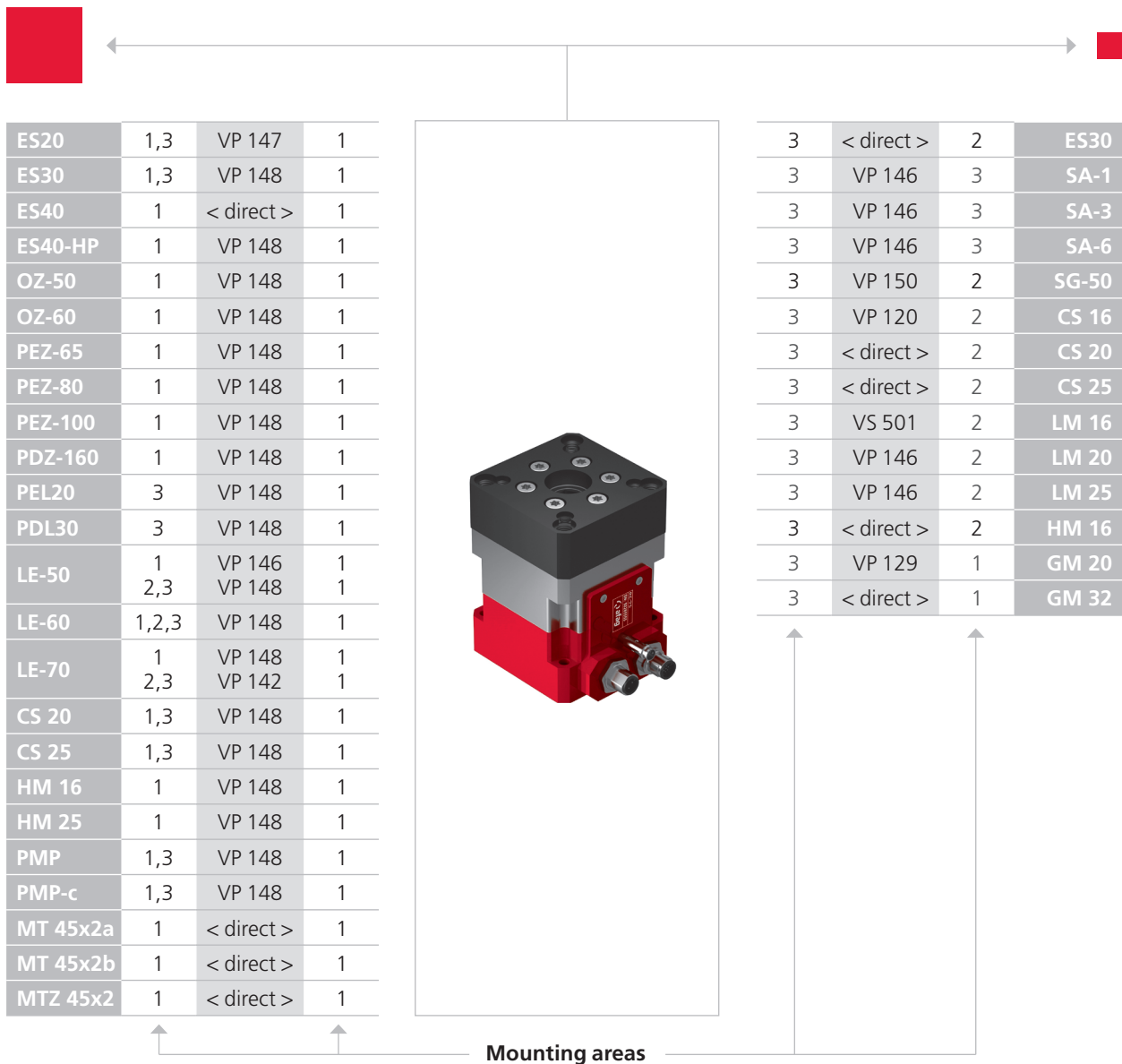
- 2x Centering bushing Ø9x4
- 2x Mounting screw M5x30

Accessories

- Flange plate set RE-75 [p. 220]
(Catalogue HT accessories)
- INI d5x36-Sn2.0-PNP-NC-M8x1

Warranty: 24 months following commissioning, but a maximum of 27 months following delivery

afag.com

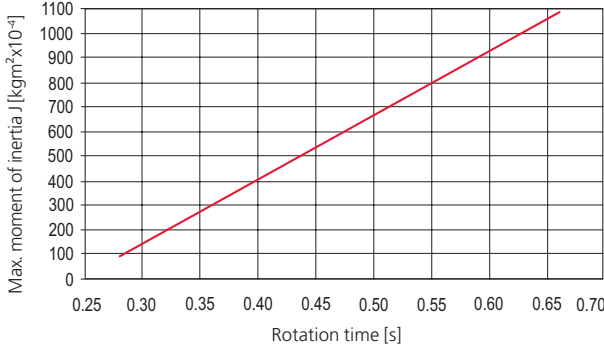


CS, ES 	LM 	HM 	SA 	UG, GM, SG, DG, PG, GE, SGE
PMP, PMP-c 	PEZ, PDZ 	PEL, PDL 	RM, RE 	CR, RM 32, RE, SREH, RA

Note that there might be different mounting positions from one module to another one.
The required connection elements and the range of support columns are depicted in the catalogue HT accessories.

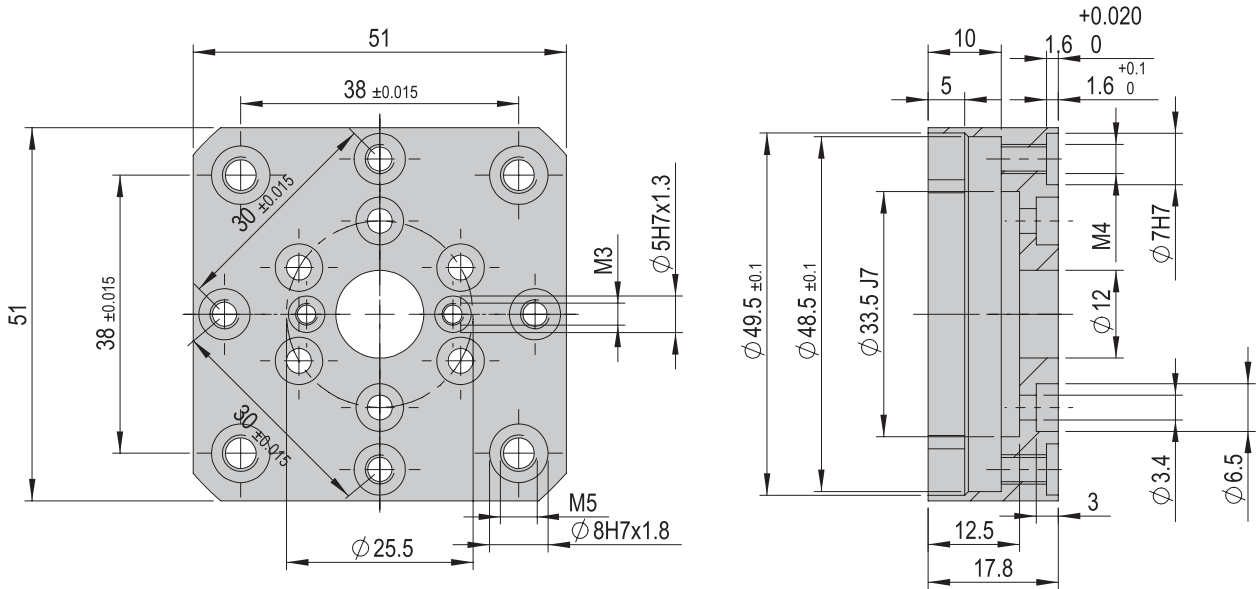
Load diagrams

Rotation time RE-75, 180° - horizontal with SE power



Accessories RE

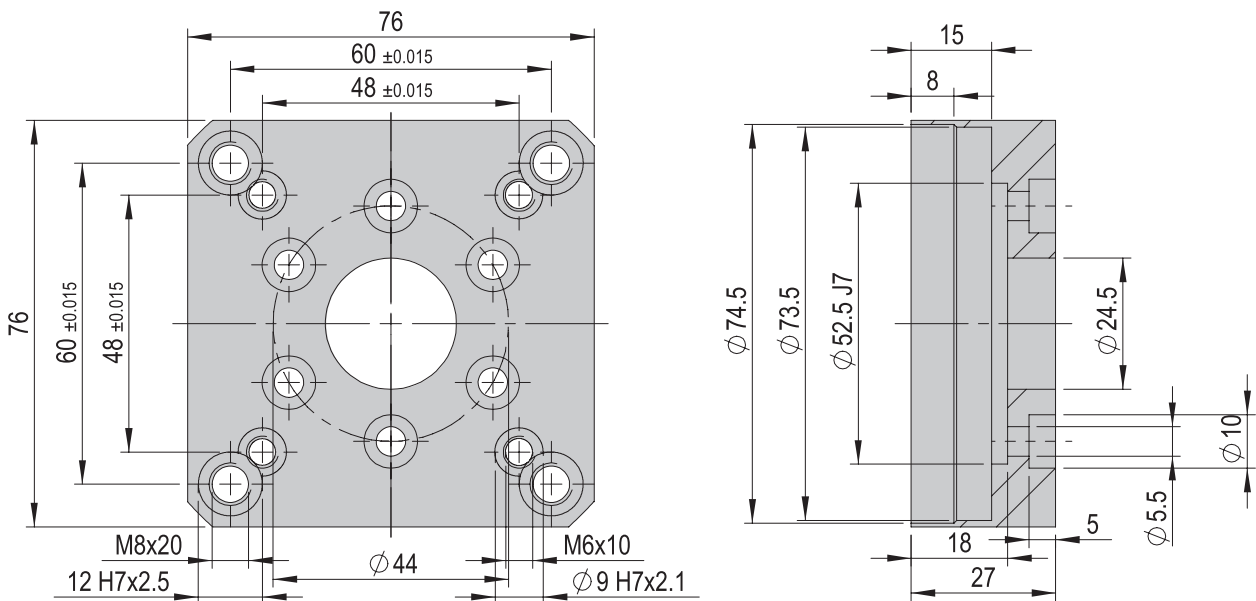
Flange plate set RE-50	RE-50
Order number	50294008
Net weight	0.063 kg



Included in the delivery
(Catalogue HT accessories)

- 6x Mounting screw M3x6

Flange plate set RE-75	RE-75
Order number	50294009
Net weight	0.21 kg



Included in the delivery
(Catalogue HT accessories)

- 6x Mounting screw M5x10

